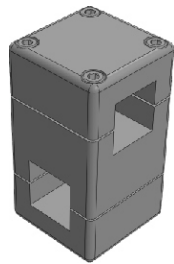
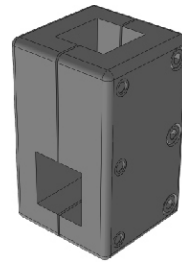


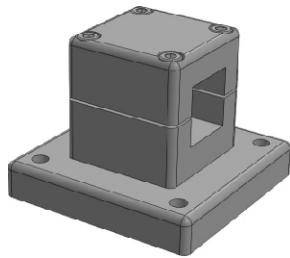
Klemmstücke für 25 mm Vierkantrohr



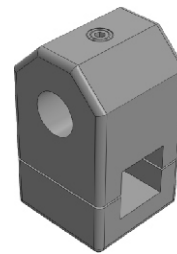
KKV-25



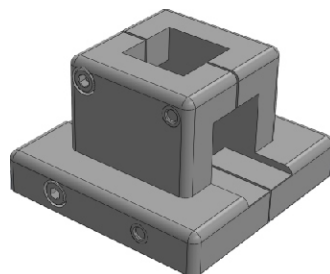
WKV-25



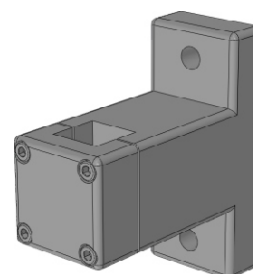
KKV-25



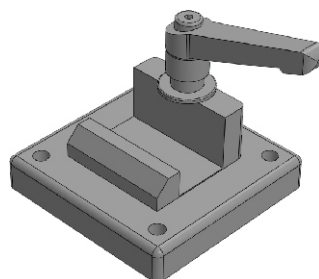
KKV-25-20R



FFKV-25



FKV-25 Bandmontage



SKV-25

Hans-Peter Diede



Kopieren, Vervielfältigen oder Weitergabe nur mit Erlaubnis der Firma Diede-Spezialteilehandel



Alle Klemmstücke werden aus POM gefertigt, Schrauben aus VA (4301), Gewindeeinsätze aus Messing
Sonderanfertigungen nach Kundenwunsch.